

THE NEW VALUE FRONTIER



Cutting Tools

DIGEST



Catalog

Insert Grades

Grooving

Drilling

Milling

Small Tools

Flat Drill

CA5 series



Features & Advantages

- Ultra fine interface increases adhesion strength to provide long tool life and stable machining
- High aspect ratio of $\alpha\text{-Al}_2\text{O}_3$ layer improves hardness and toughness
- Smooth and flat coating surface provides low cutting force to prevent sudden breakage
- Special carbide substrate improve deformation resistance at high temperature
- Consist of smart chipbreaker PP, PQ and PG for chip control improvement

High speed and longer tool life

CA510

Continuous to light interrupted machining

CA515

General use

CA525

Heavy interrupted and high feed rate machining

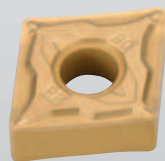
CA530



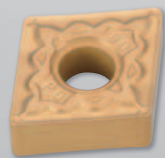
Chipbreaker for steel machining

Applicable Range

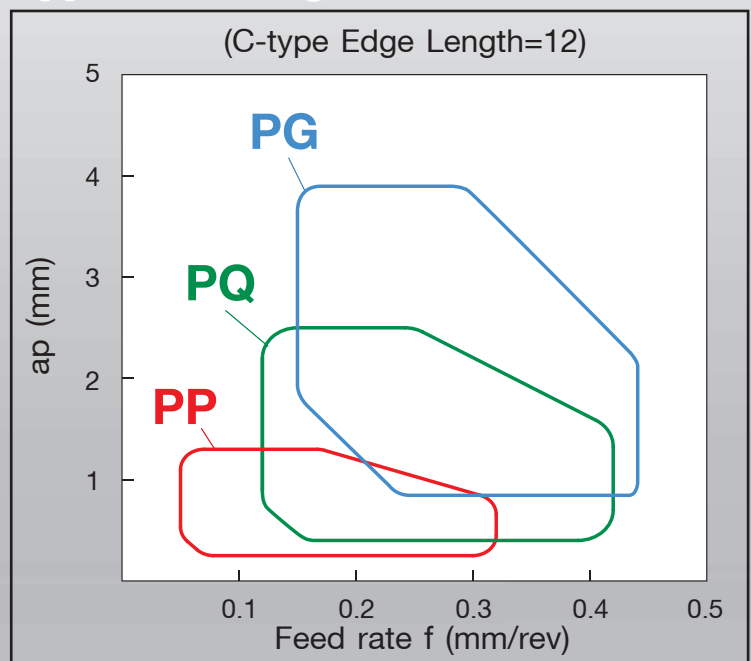
PP chipbreaker
(For Finishing)



PQ chipbreaker
(For Finishing-Medium)



PG chipbreaker
(For Medium-Roughing)



KGD

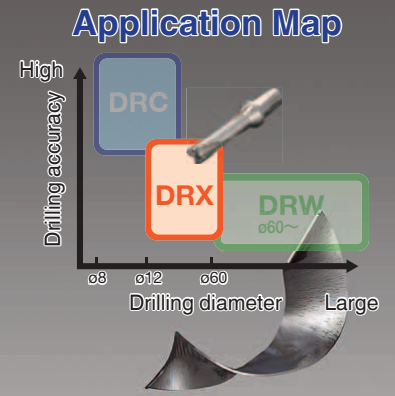
KGDF



Features & Advantages

- Good chip control with expanded line up of chipbreakers
- High precision edge preparation ($\pm 0.03\text{mm}$ for 2mm to 4mm width inserts)
- Long tool life and high efficiency machining through MEGACOAT technology
- Comprehensive toolholder line up (Integral type and Separate type) are available

DRX



Chipbreaker



GM Chipbreaker



GH Chipbreaker

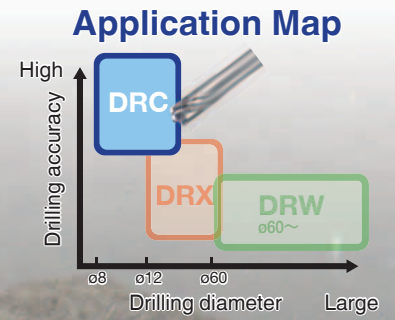


SM Chipbreaker

Features & Advantages

- Twisted coolant hole technology for improved chip evacuation
- Three chipbreakers for a variety of workpiece materials
- MEGACOAT insert grades cover a variety of application
- Balanced cutting system for precision drilling and excellent surface finish

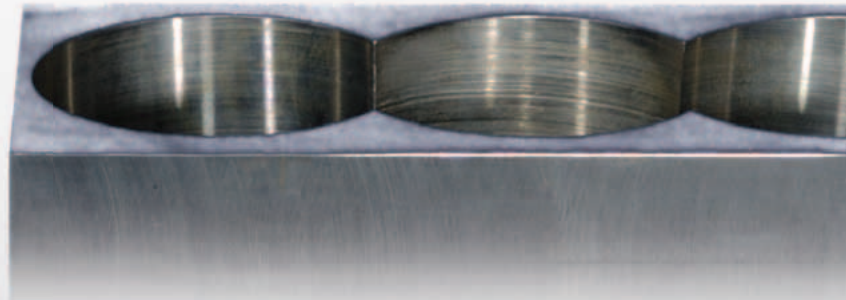
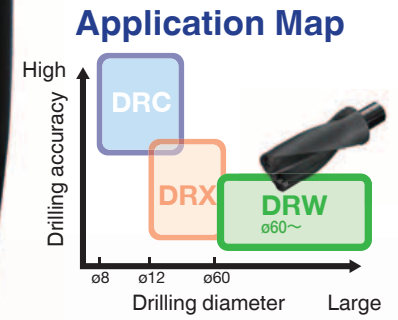
DRC



Features & Advantages

- Self-Clamping design improve clamp rigidity
- Self-Centering design leads to smooth drilling, low cutting force and high quality surface of the hole
- Multiple Helical Angle Flute design provides superior drill body stiffness and chip evacuation
- Direct Cooling design prevents chip adhesion, and allows for quick and smooth chip evacuation

DRW



Features & Advantages

- Applicable drilling diameter over 60mm and cutting depth up to 3D
- Special geometry for reducing drilling load at the start of drilling
- Two effective flutes allow high feed rates and smooth chip evacuation for improved productivity
- Superior fracture resistance and long tool life with MEGACOAT PR1230 grade

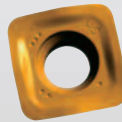
MFH

MFH Mini is now available!!



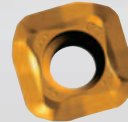
Chipbreaker

GM Breaker



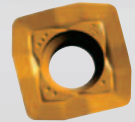
(General purpose)

LD Breaker



(Large ap)

FL Breaker

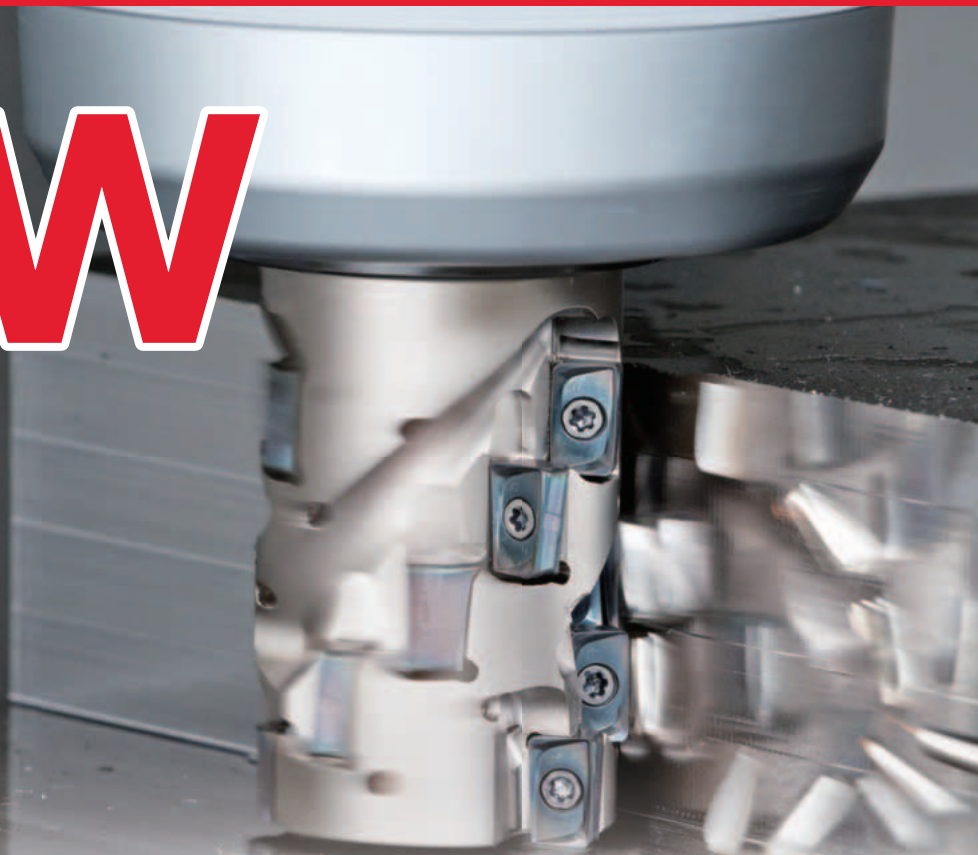


(Wiper edge)

Features & Advantages

- Larger depth of cut ($ap=5mm$) abilities
- Multi-functional cutter for ramping, helical milling and plunging
- MEGACOAT NANO with long tool life
New grade for difficult-to-cut material
- Utilize a contoured cutting-edge design producing reduced cutting forces and lower vibrations

MEW



Chipbreaker

GM Breaker



(General purpose)

SM Breaker



(Low cutting force)

GH Breaker



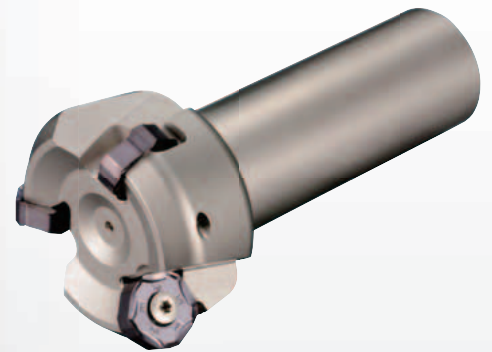
(Heavy milling)

Features & Advantages

- Unique insert-forming technology reduces cutting forces equivalent to positive inserts
- Improved surface finish and minimized vibration due to helical cutting edge and optimum axial rake design
- Extended tool life by MEGACOAT NANO coating technology
- Economical 4-edged insert reduces tooling cost
- 3 chipbreakers that cover a wide range of applications

MFPN

- Cost efficiency with 10-edged pentagonal inserts
- Low cutting forces and reduced chattering with a helical cutting-edge design
- Tough & reliable dual angle edge design
- Chip evacuation improved by 3-dimensional chipbreaker
- Long tool life with MEGACOAT NANO coating



Chipbreaker

GM

SM

GL

W

GH



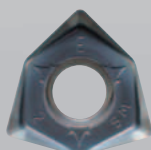
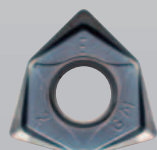
MFWN

- Low cutting forces due to sharp cutting and high rake angle design
- Dynamic slant-design on insert reduces shock and chattering
- Superior fracture resistance due to thick edge design
- Neutral inserts available for shouldering & facing
- Extended tool life by MEGACOAT NANO coating
- 4 chipbreakers for various applications

Chipbreaker

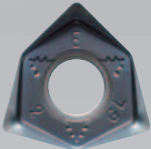
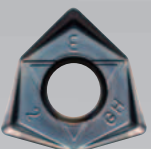
GM

SM



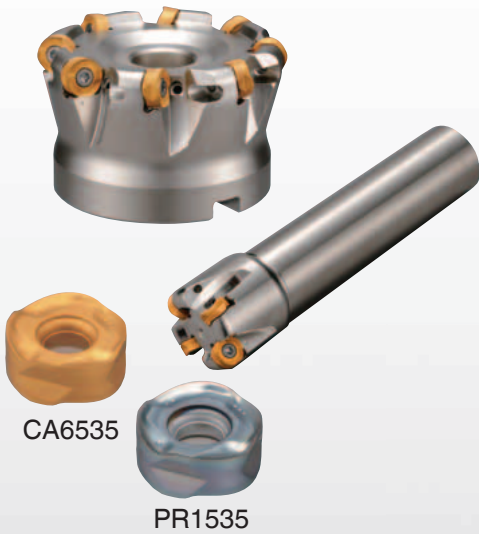
GH

GL



MRW

- Lower cutting costs with economical 8-edged insert
- Low cutting force by helical cutting edge design
- Flat lock structure for stable machining
- Applicable to wide range of applications from steel to difficult-to-cut materials

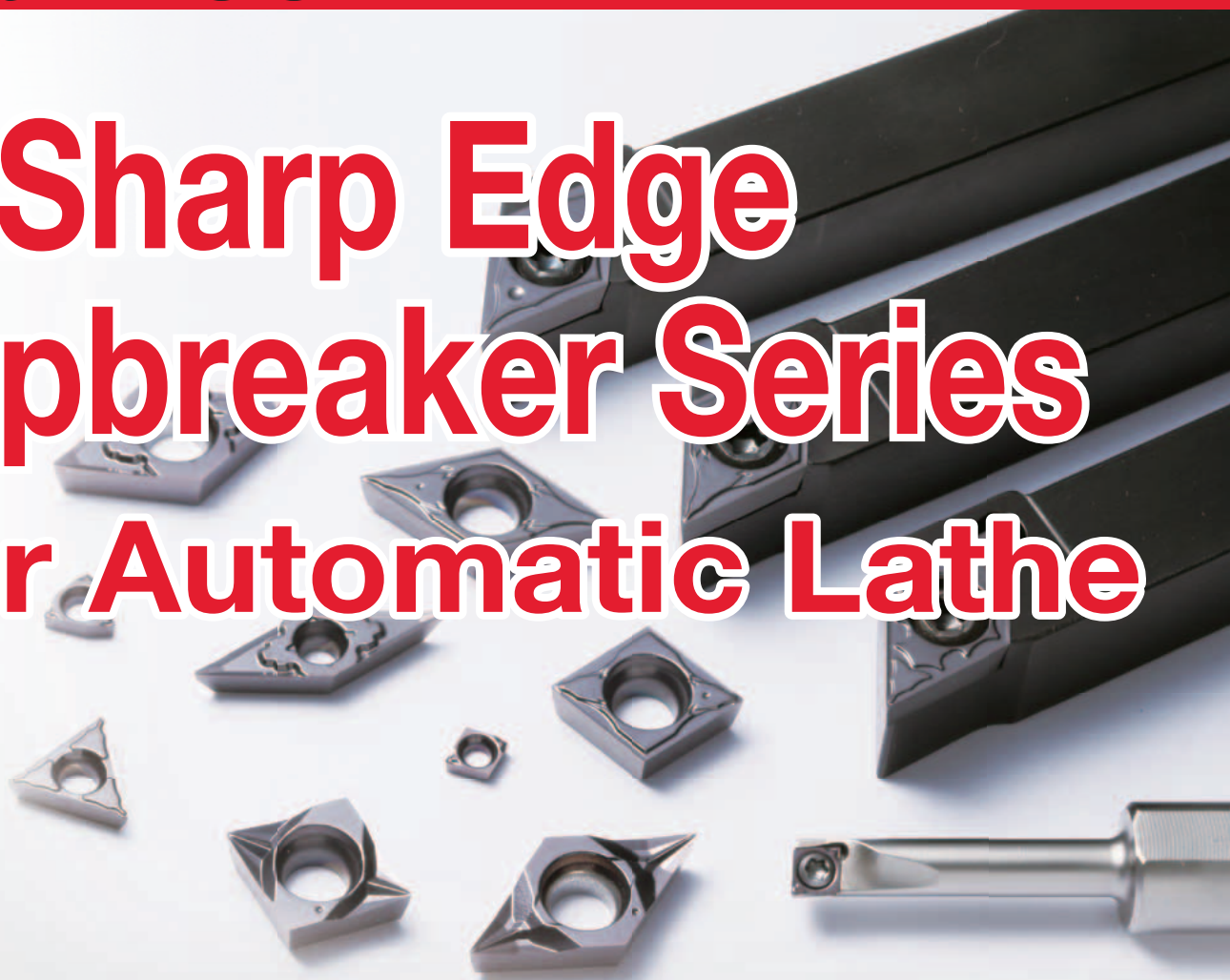


MRX

- Positive round insert with 6-edged insert
- Low cutting force with helical cutting edge design
- High stability with flat lock structure to hold insert
- Wide application range
(R4, R5, R6 and R8 radius sizes available)

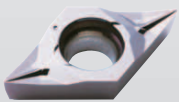


3D Sharp Edge Chipbreaker Series for Automatic Lathe



Low cutting force oriented

SK chipbreaker



For low cutting force
(Finishing)

CK chipbreaker



For low cutting force
(General use)

Chip control oriented

GQ chipbreaker



For small to large ap

GF chipbreaker



For finishing

CF chipbreaker



For minute ap

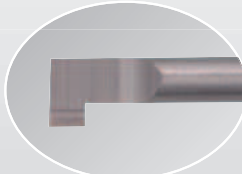
Features & Advantages

- New chipbreaker series delivers excellent chip control in wide range of cutting
- Sharp cutting with ground edge periphery in high precision
- Mirror polished surface insert improve adhesion resistance and surface finish

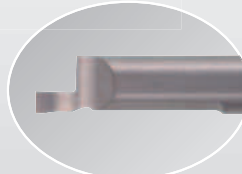
EZ Bar



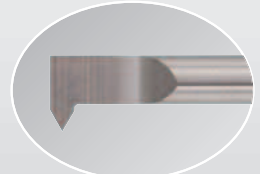
Chipbreaker newly joined the line up



Internal grooving



Face grooving



Threading

Features & Advantages

- Easy adjustment and high precision
- Smooth coolant supply
- Long tool life with MEGACOAT PR1225 for steel and stainless steel machining
- Available 4 inserts for boring, grooving, internal face grooving, and threading

KGD

for Automatic Lathe



PG chipbreaker

PF chipbreaker

PQ chipbreaker



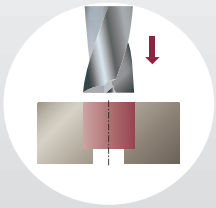
Features & Advantages

- **Thinnest edge width is available from 1.3mm**
- **Excellent chip control due to new PF&PQ chipbreaker**
- **Improved insert clamping force generated by an innovative toolholder design**

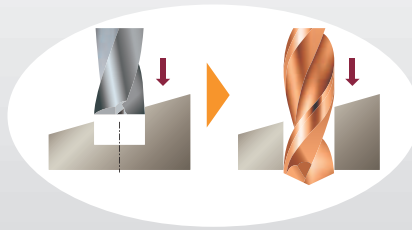
2ZDK SUPER FLAT



Applications



Bolt Counterbore



Counterboring on Slant Surface/Guide Hole Cutting

Features & Advantages

- 180° flat edge ends are applicable to various applications including counterboring on slant surface
- Combination of smooth chip control and high rigidity due to the special flute shape
- Short flute length & plus tolerance endmill is available Suitable for shallow drilling less than 1.5D

KYOCERA Asia Pacific Network

Gurgaon Office

KYOCERA Asia Pacific India Pvt. Ltd.
Plot No. 51, Phase-I, Udyog Vihar Gurgaon 122016, Haryana, India
Phone: +91-124-4025022
Fax: +91-124-4025001

Bangalore Office

KYOCERA Asia Pacific India Pvt. Ltd.
No 242 1st Floor Jeevan Kendra Layout, Cambridge Road,
Ulsoor, Bangalore 560008, Karnataka, India.
Phone: +91-80-41232418
Fax: +91-80-41232419

Chennai Office

KYOCERA Asia Pacific India Pvt. Ltd.
4/14, 5th Floor, Nostalgia Building, Soundarapandian Street, Ashok Nagar,
Chennai 600083, Tamilnadu, India
Phone: +91-44-42119746

Pune Office

KYOCERA Asia Pacific India Pvt. Ltd.
No. 211, 2nd Floor, Rainbow Plaza SR. No.7/1+2A/2/1 And 7/1+2A/2/2,
Near Tiffin Restaurant, Rahatani, Pimple Sudagar, Pimpri, Pune 411017,
Maharashtra, India
Phone: +91-20-46781305

Bangkok Office

KYOCERA Asia Pacific (Thailand) Co., Ltd.
159 Serm-mit Tower, 19th Floor, Sukhumvit 21 Road, North Klongtoey, Wattana,
Bangkok 10110, Thailand
Phone: +66-2-661-6400
Fax: +66-2-661-6413

Rayong Office

KYOCERA Asia Pacific (Thailand) Co., Ltd.
Eastern Seaboard Industrial Estate (Rayong) Esie Plaza II, Room No#1-03, 300/7 Moo 1, Tambol Tasit,
Amphur Pluak Daeng, Rayong 21140, Thailand
Phone: +66-3-803-6100
Fax: +66-3-803-6101

Amata Nakorn Office & Technical Center

KYOCERA Asia Pacific (Thailand) Co., Ltd.
Amata Nakorn Industrial Estate 700/944 Moo 5, Tambol Nong Kakha Amphur
Panthong Chonburi, 20160 Thailand
Phone: +66-3-821-2350
Fax: +66-3-821-2353

Ho Chi Minh Representative Office

KYOCERA Asia Pacific Pte. Ltd.
5F Somerset Chancellor Court 21-23
Nguyen Thi Minh Khai District 1, HCM City, Vietnam
Phone: +84-8-3822-1240
Fax: +84-8-3822-1241

Hanoi Representative Office

KYOCERA Asia Pacific Pte. Ltd.
Room 207, 2F, V-Tower 649, Kim Ma,
Ba Dinh District, Hanoi, Vietnam
Phone: +84-4-3766-7883
Fax: +84-4-3766-7884

Taiwan

Taipei

Taipei Branch

KYOCERA Asia Pacific Pte. Ltd.
8F, NO.101, Sec.2, Nanjing East Road,
Taipei 10457, Taiwan, ROC
Phone: +886-2-2567-2008
Fax: +886-2-2567-2700

Philippines

Manila

Manila Branch

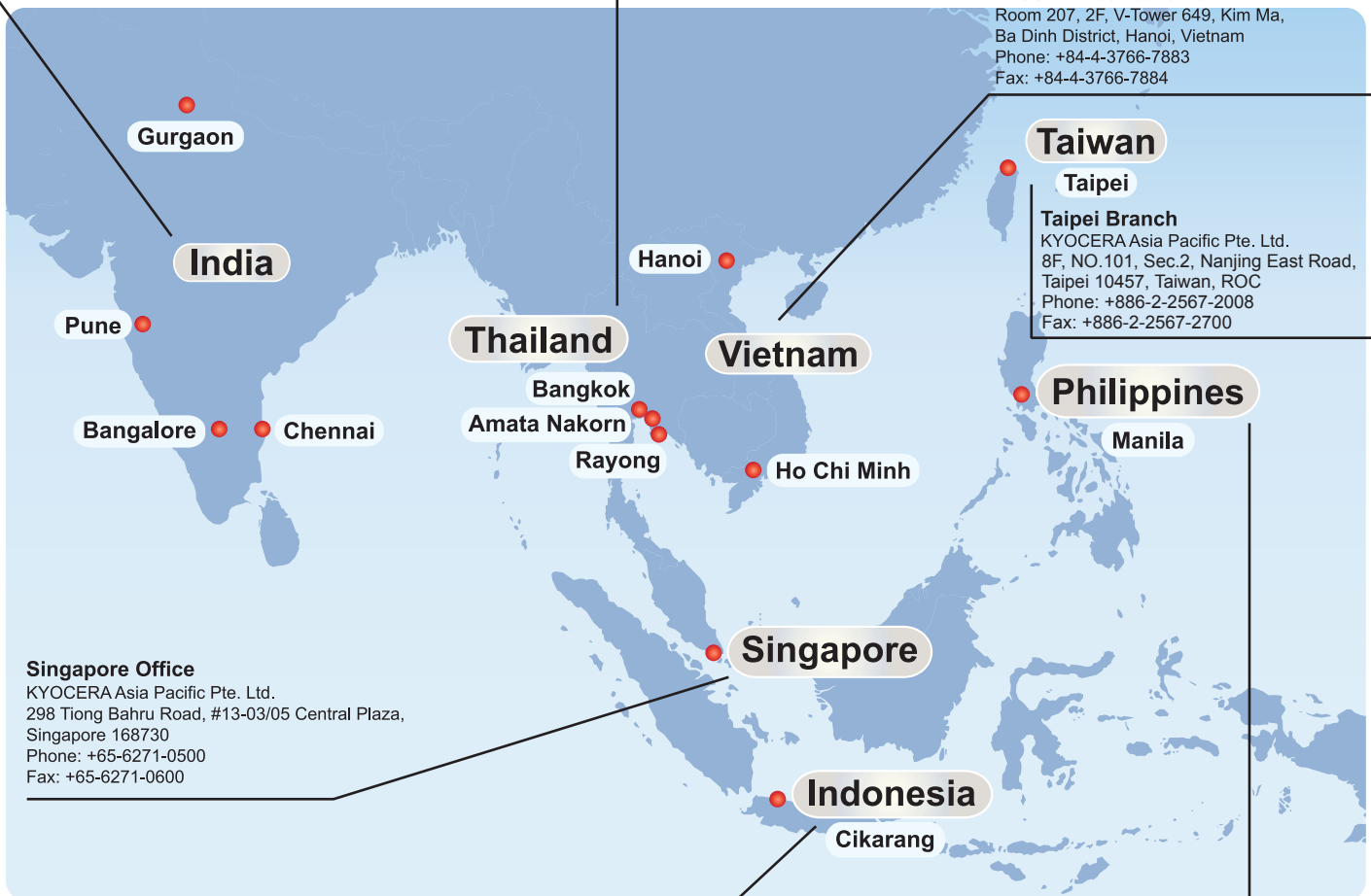
KYOCERA Asia Pacific Pte. Ltd.
11B Kingston Tower, Block 2, Lot 1
Acacia Avenue, Madrigal Business Park Alabang,
Muntinlupa City 1770 Philippines
Phone: +63-2-5197189
Fax: +63-2-7750532

Indonesia Representative Office

KYOCERA Asia Pacific Pte. Ltd.
Jalan Niaga Raya Kav. AA3 Block AB6,
Jababeka II - Cikarang Bekasi, Indonesia 17530
Phone: +62-21-29083848
Fax: +62-21-29083846

Indonesia

Cikarang



Singapore Office

KYOCERA Asia Pacific Pte. Ltd.
298 Tiong Bahru Road, #13-03/05 Central Plaza,
Singapore 168730
Phone: +65-6271-0500
Fax: +65-6271-0600

Search "KYOCERA Tools" on App Store & Google play



- Downloadable high resolution cutting tools catalogues
- Product usage videos
- Turning, milling and drilling calculation tools
- KYOCERA instant contact



ADVANCING PRODUCTIVITY

DC001-1EN